

# Sherele

1A+B+C

traditionel  
arr.Rich.Hyt.2022

**Moderato**

Chords: B, Am, B<sup>7</sup>, C, B<sup>7</sup>, Am, B<sup>7</sup>, Am, Em, F<sup>7</sup>, B<sup>7</sup>, Am, B<sup>7</sup>, Em, B<sup>7</sup>, Am, B<sup>7</sup>, Em, B<sup>7</sup>, Em.

Tempo: Moderato, then Largo.

Measure numbers: 7, 12, 18, 21, 25.

First ending: 1. B<sup>7</sup>, 2. B<sup>7</sup>.

Second ending: 1. Em, 2. Em.

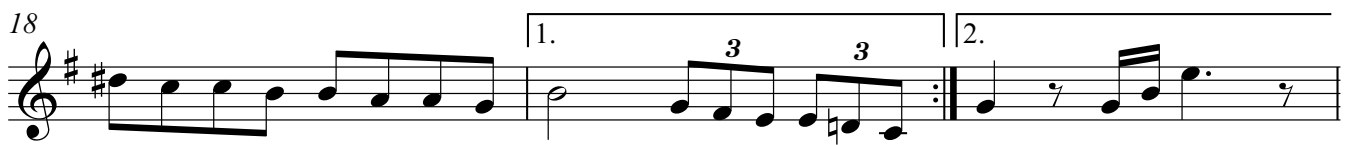
Triplet: 3, 3.

# Sherele

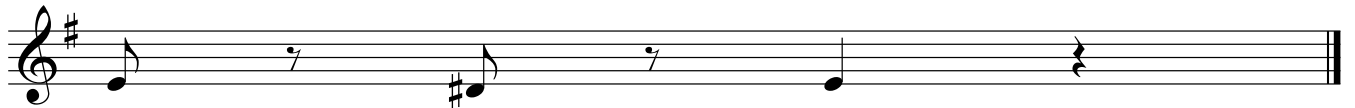
2A+B+C

traditionel  
arr.Rich.Hyt.2022

**Moderato**



**25 Largo**

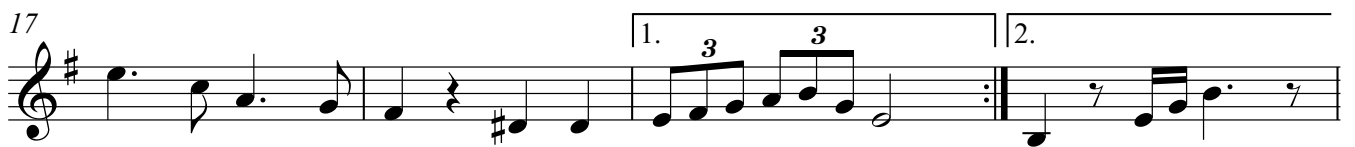


# Sherele

3A+B

traditionel  
arr.Rich.Hyt.2022

**Moderato**



25 **Largo**

