

# Argumenter i et musikliv

Tuba

♩ = 100

Richard Hytholm  
2018

accel. ♩ = 120

7 *mf*

7 *rall.*

11 *ff* *mf* *f*

15 *ff* *mf* *f* **9** **2** *accel.*

28 ♩ = 120 *ff* *p* *ff*

34 ♩ = 120 *ff* **3** *ff*

39 **5** *mf*

48 **3** *f* *f* **3**

57 **6** *ff* *accel.*

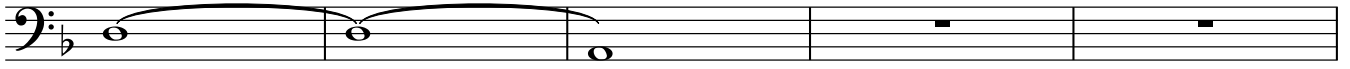
66 ♩ = 100 **2** *p* *mf* **2**

76 ♩ = 120

Tuba

rall. . . .

77

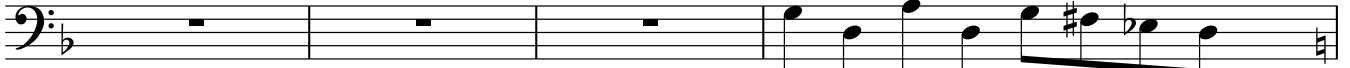


*mf*

82

$\text{♩} = 100$

rit. . .  $\text{♩} = 90$



*mf*

86

accel. .



88

$\text{♩} = 110$

rit. .

$\text{♩} = 90$

accel. .



92

$\text{♩} = 100$

accel. .



*mf*

$\text{♩} = 110$

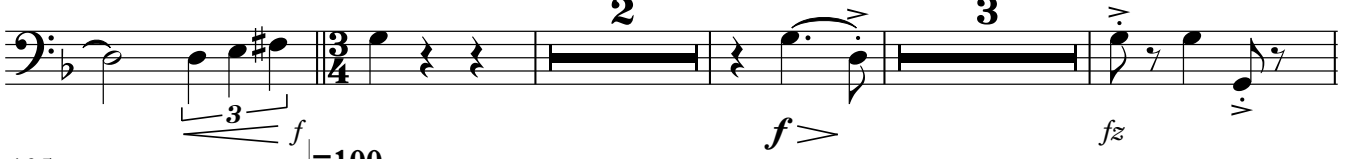
*f*

*pf*

*pf*

*mf*

96



*f*

*f* >

*fz*

105

$\text{♩} = 100$



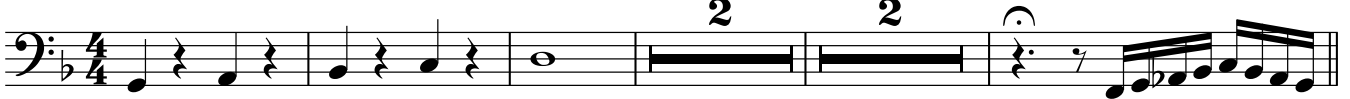
*mf* >

*mf* >

128

rall. .

accel. .



136

$\text{♩} = 120$



144

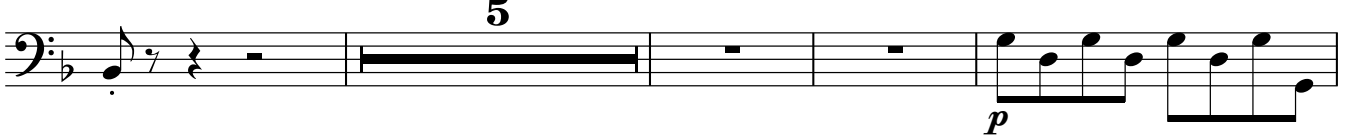


*f*

150

rall. .

$\text{♩} = 100$  accel. .



*p*

Tuba

159

♩=120

**4**

Musical score for Tuba, measures 159-162. The score is written in bass clef with a key signature of one flat (B-flat). The tempo is marked as quarter note = 120. The music consists of four measures. Measures 159 and 160 feature eighth-note patterns. Measure 161 has a half note with an accent (>) and a dynamic marking of *fff*. Measure 162 is a whole rest. A large number '4' is positioned above the staff in measure 162, and a thick black bar covers the staff in measure 162.